

KNIPEX Quality – Made in Germany



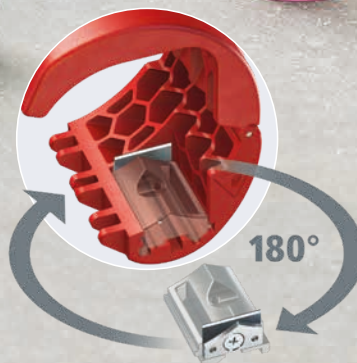
KNIPEX BiX® – Cutters for plastic pipes and sealing sleeves

Clean cut everytime

Compact. Versatile. Fast.



Blade at centre:
Regular cutting of various
pipe diameters

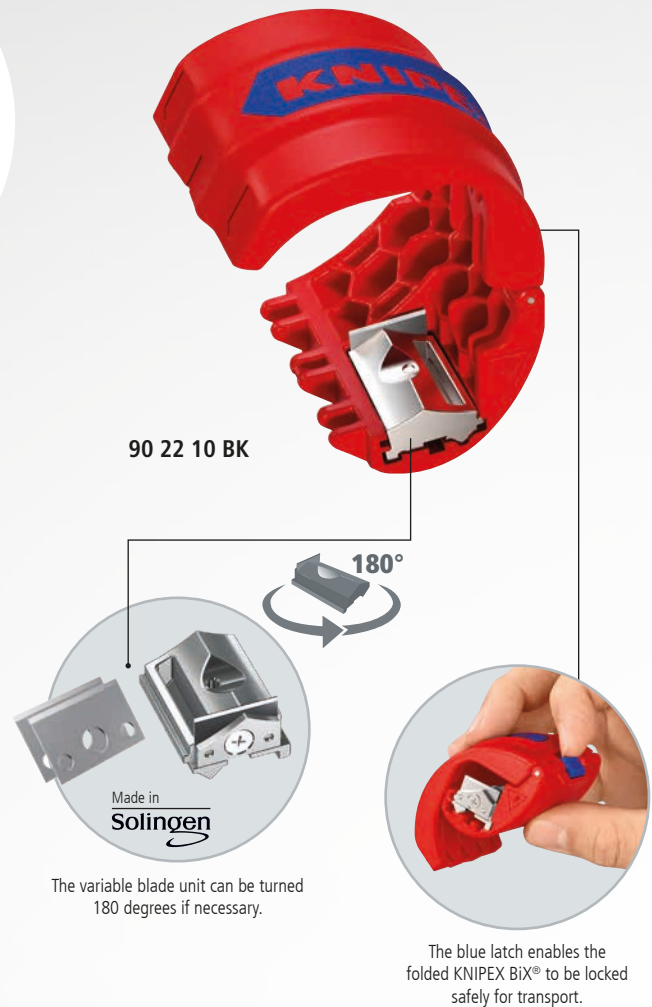


Blade on the outside:
Cutting sealing sleeves
close to the wall

KNIPEX BiX® Cutters for plastic pipes and sealing sleeves

**Practical tool for plumbers and electricians:
Cuts plastic pipes and sealing sleeves quickly
and efficiently**

- ▶ Clever pipe cutter: Cuts pipes without shavings and fits comfortably in the hand
 - ▶ Can cut high-temperature plastic drain pipes and electrical conduits in next to no time
 - ▶ Can be used to cut sealing sleeves during final assembly – close to the wall, standard-compliant
- > Cuts unreinforced plastic pipes from Ø 20 to 50 mm with a wall thickness of up to 2.4 mm
 - > Cuts pipes quickly, cleanly and without shavings
 - > Cuts sealing sleeves approx. 2-3 mm from the wall
 - > Rotatable knife block for cutting plastic pipes (blade in the middle) and sealing sleeves (blade outside)
 - > With locking mechanism for safe transport
 - > Two spare blades integrated in the tool
 - > Tool made of stable, reinforced plastic, die-cast zinc blade unit
 - > Blades made of special surgical stainless steel – Made in Solingen



Practical, quick and clean: Plastic pipes can be cut in no time and sections are held securely in the tool.

Follow DIN 18534 standards in your work right now:
Drip and sealing sleeves protect walls against long-term damage from leaks.



The unique design of the rotating blade unit means that drip and sealing sleeves can be reliably cut 2 to 3 mm from the wall, so that moisture can be safely drawn away.

Article no.	EAN	↔ mm	Cutting values for HT and plastic pipes Ø mm	Cutting values for sealing sleeve Ø mm	⚖ g
90 22 10 BK	N 4003773-087311	72	20 - 50	20 - 50	108
90 22 10 E01	N 087564	Spare blades for 90 22 10 BK			7